

# PROJECT DATA

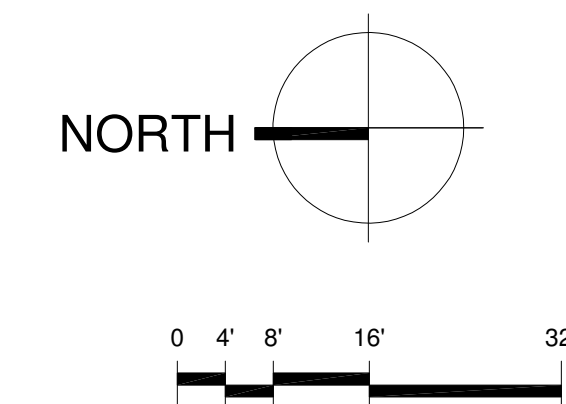
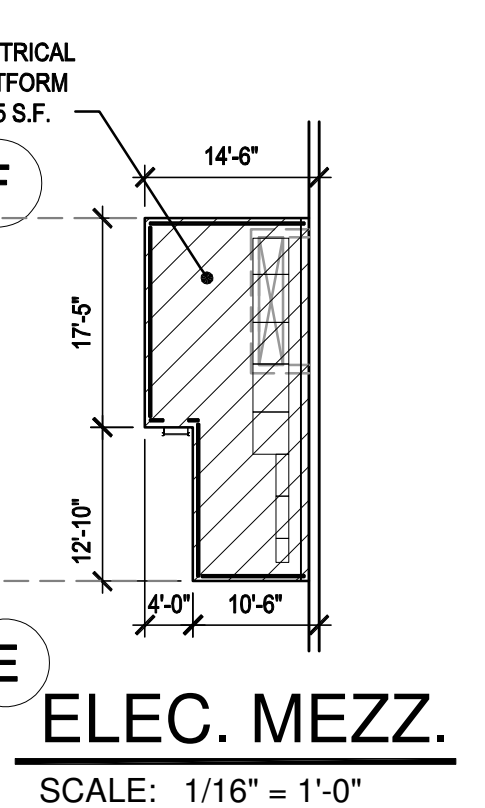
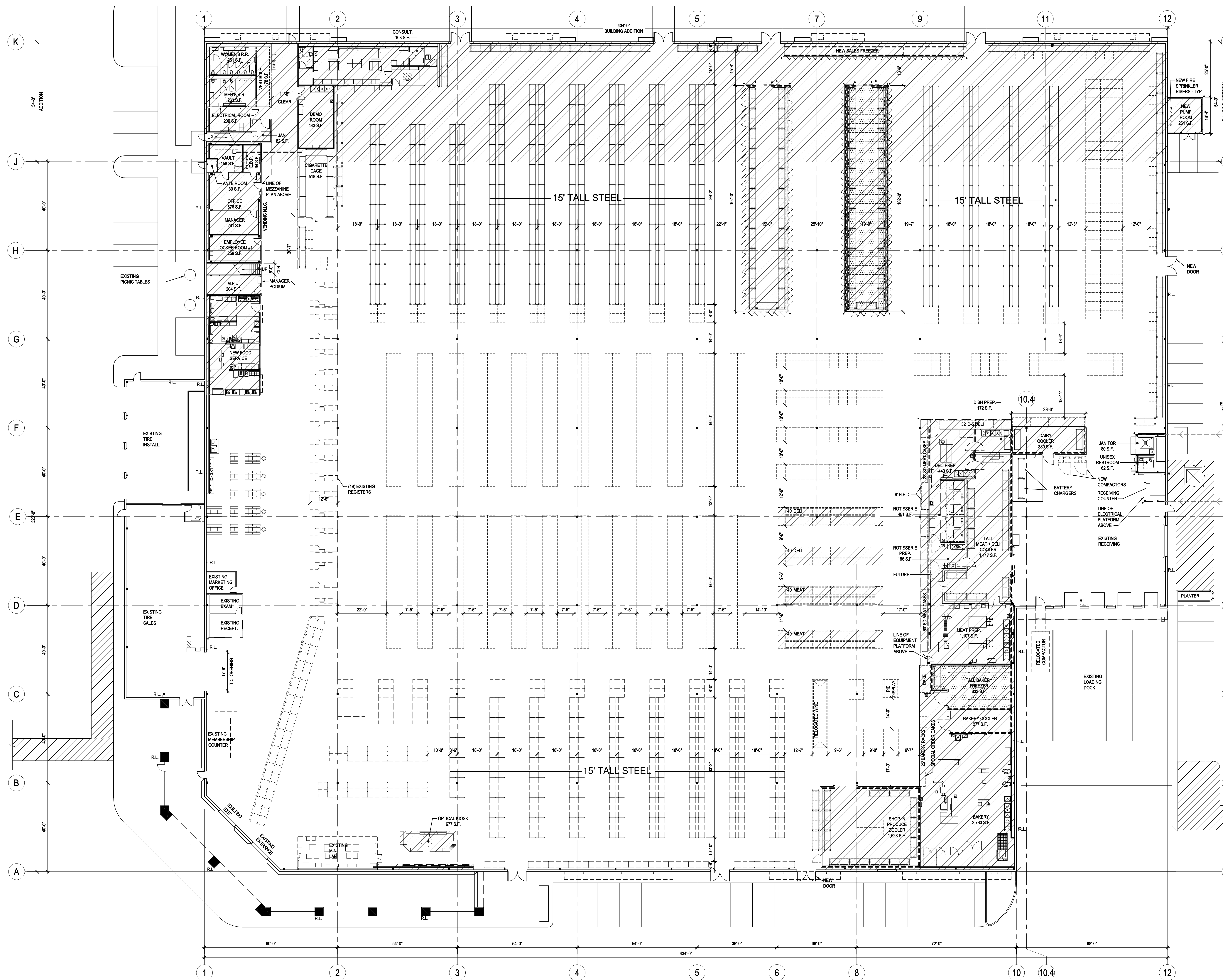
EXIST. BUILDING DATA:

EXIST. BUILDING AREA	130,227 S.F.
EXIST. TIRE CENTER	5,184 S.F.
TOTAL EXIST. BUILDING	135,411 S.F.
NEW BUILDING ADDITION	23,435 S.F.
TOTAL BUILDING	158,846 S.F.

RACK COUNT:

GROCERY RACKS	220
CENTER SECTION	21,491 S.F.
HARDLINE RACKS	122

NOTES:  
EXISTING CONDITIONS TO BE FIELD VERIFIED.



**COSTCO WHOLESALE**  
S. SACRAMENTO, CA #464  
7981 E. STOCKTON BLVD.  
SOUTH SACRAMENTO, CA 95824

**MULVANNY G2**

1110 112TH AVE. NE | SUITE 500  
BELLEVUE, WA | 98004  
1.425.463.2000 | 1.425.463.2002  
MulvannyG2.com

93-1600-17  
OCTOBER 27, 2006  
CONCEPT FLOOR PLAN

# COSTCO WHOLESALE CONCEPT FLOOR PLAN

SOUTH SACRAMENTO, CA